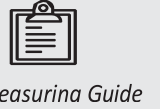




Measuring Guide

Use this Guide along with the "How to measure your kitchen" video (www.clearwater-kb/howtomeasure) which will give you step-by-step instructions on how to measure and create a floor plan (aerial view) of your space.

You Will Need:



Name: _____

Email: _____

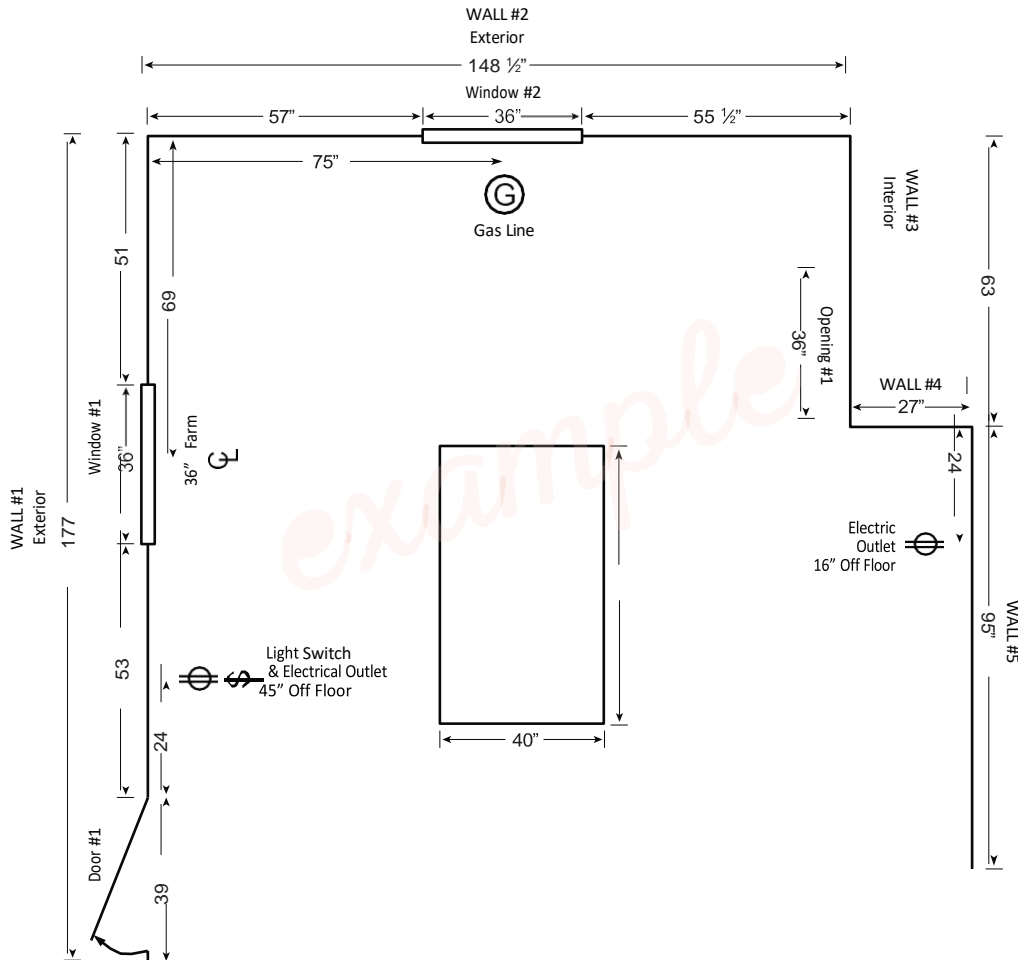
Address: _____

Phone: _____

Door Style/Finish: _____

City: _____ State: _____ Zip Code: _____

Please use the example below for your reference while creating the floor plan of your space.

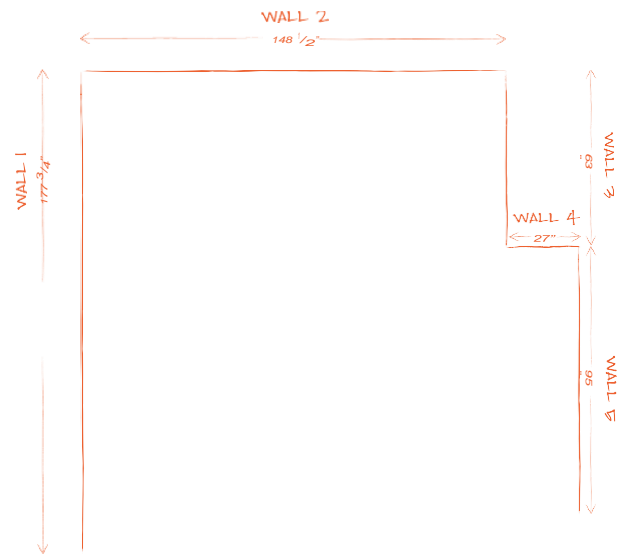


Utility/Mechanical Legend: Use these symbols on your floor plan.

- Center Line
- Light Switch
- 220V (Electric Stove)
- Outlet
- Gas

Step 1: Measure Your Space

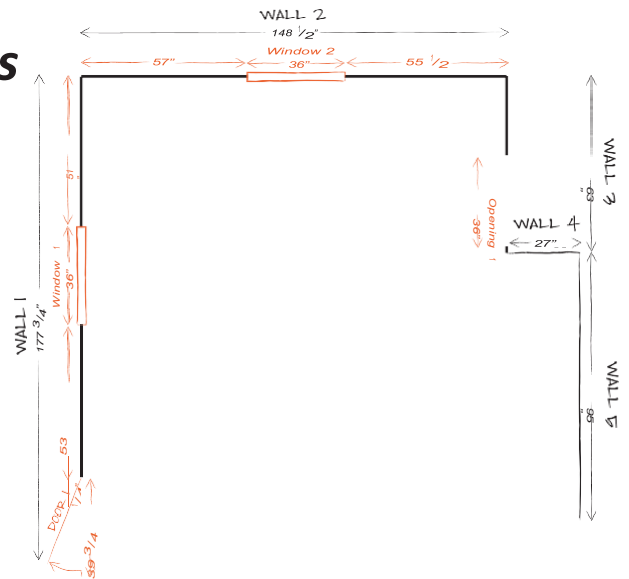
- Starting in the left corner, measure each wall in the space that will contain cabinets. Record those measurements (in inches) on the "Floor Plan Design Grid" located on the last page of this Measuring Guide.
- Number each wall on the floor plan.



TIP Be sure to measure the full length of each wall

Step 2: Doors, Windows, Room Openings

- Locate and measure doors, windows, and room openings.
- Record and Number each door, window and room opening on the grid.
- Record the corresponding dimensions in the measurement charts below.

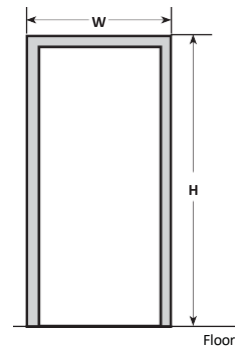


TIP When measure openings such as doors and windows include the trim/casing in the dimensions.

Door/Opening Measurements

*Label on Floorplan using the corresponding numbers below

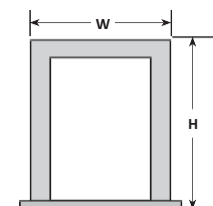
Opening or Door	Width	Height	Notes:
1			
2			
3			
4			



Windows Measurements

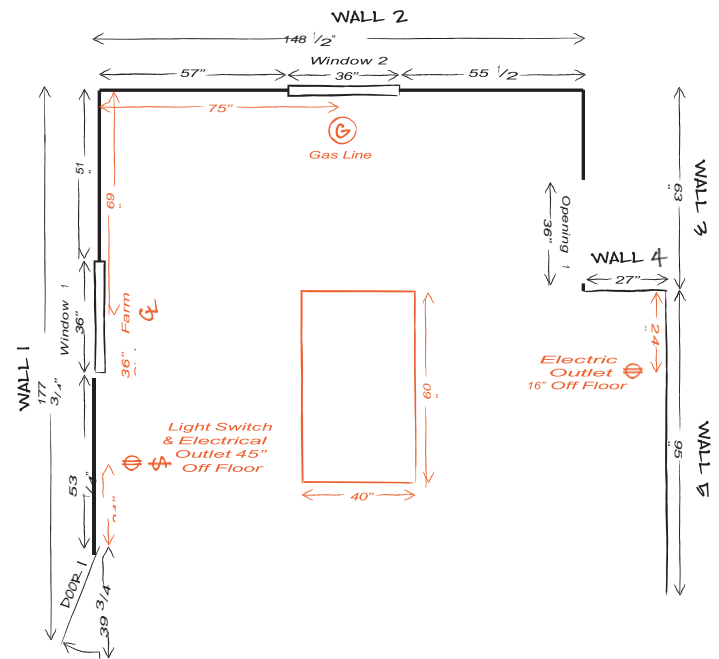
*Label on Floorplan using the corresponding numbers below

Window	Width	Height	Notes:
1			
2			
3			
4			



Step 3: Obstacles

- Locate and measure obstacles such as electrical outlets, vents, pipes, radiators, etc.
- Record any islands or bars you already have or wish to add.
- Record and Number each obstacle on the grid.



Step 4: Appliances

Common appliances typically come in standard sizes. Luxury appliances such as cooktops, range hoods, warming drawers, and wine chillers have dimensions that can vary drastically.

*It is important to pick out your appliances BEFORE your cabinets because we will need to fit your cabinets AROUND your new appliances.

TIP

Send us manufacturer specification sheets and installation guides if possible.

Range

Brand/Model

Width

Depth

Height

Microwave

Brand/Model

Width

Depth

Height

Refrigerator

Brand/Model

Width

Depth

Height

Dishwasher

Brand/Model

Width

Depth

Height

Cook-Top

Brand/Model

Width

Depth

Height

Oven

Brand/Model

Width

Depth

Height

Other

Brand/Model

Width

Depth

Height

Step 5: Ceiling Height

Accurate ceiling height measurements are very important when determining which wall cabinets and crown moulding you want in your new kitchen. It is very important to take several measurements since the height can vary in different spots in the room. Many older homes have soffits above their wall cabinets that need to be taken into consideration when creating your design.



TIP

Measure the height of 3 areas & record the shortest dimension.

A = Ceiling Height

Ceiling Height: _____

Soffits (the area between the top of the wall cabinet and the ceiling).

Does the room have soffits?

If yes, please mark the diagram to the right.

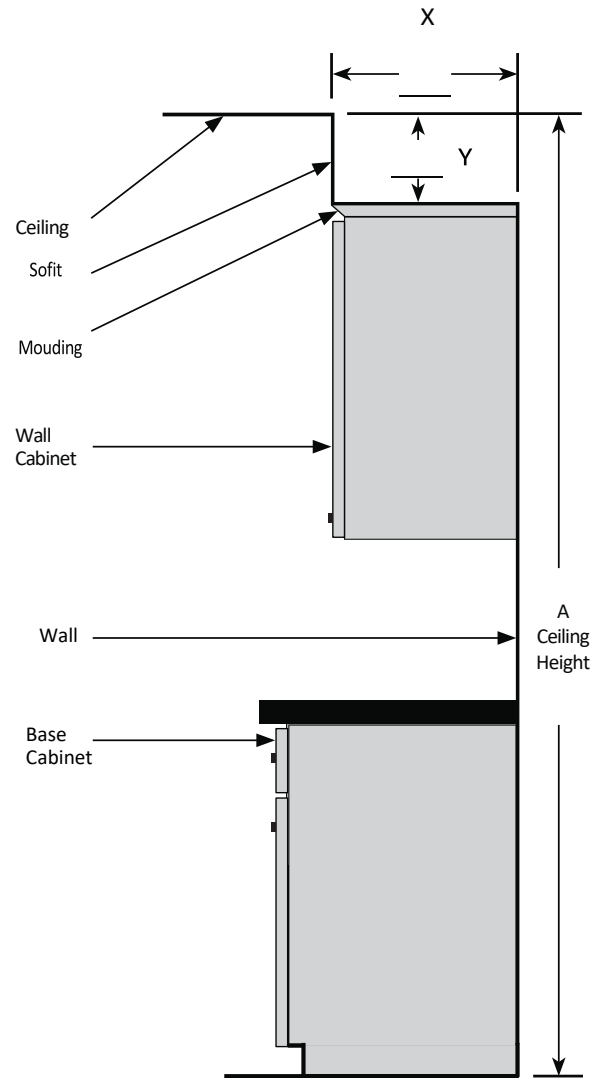
Yes No

Do you plan to keep the existing soffits?

Yes No

Please check any additional items you are interested in adding:

- | | | | |
|---|---|--|---|
| <input type="checkbox"/> Base Molding | <input type="checkbox"/> Garbage Pull Out Cabinet | <input type="checkbox"/> Microwave Upper Cabinet | <input type="checkbox"/> Soft Close Doors |
| <input type="checkbox"/> Crown Molding | <input type="checkbox"/> Glass Doors | <input type="checkbox"/> Open Shelves | <input type="checkbox"/> Wide Storage Drawers |
| <input type="checkbox"/> Crown Molding on the Ceiling | <input type="checkbox"/> Lazy Susan | <input type="checkbox"/> Plate Rack | <input type="checkbox"/> Wine Storage |
| <input type="checkbox"/> Cutlery Divider | <input type="checkbox"/> Light Rail Molding | <input type="checkbox"/> Roll Out Trays | <input type="checkbox"/> Wood Hood |
| <input type="checkbox"/> Decorative Door Panels | <input type="checkbox"/> Microwave Base Cabinet | <input type="checkbox"/> Spice Pull Out Cabinet | |



Step 6: Photos & Submit

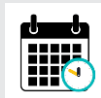
Now that you have completed the measuring guide, it is time to take some photos of your current space. Make sure to include pictures of each wall that will contain cabinets.



TIP

Include photos of any difficult areas that you may have found while drawing your area.

Contact US:



Online: Click on "Make An Appointment" on the homepage. Fill out the form and we will contact you right away!



Email: Attach the measuring guide and pictures and email to us at: info@clearwater-kb.com



Call: Pick Up the Phone and CALL us at: 208-400-1232



Thank you for completing your measuring guide.
A member of our design team will be in touch with you within 24 hours.



Floor Plan Design Grid

Use the grid below to draw the floor plan (aerial view) of your space. Follow each step of the guide to complete the drawing.

- Step 1: Measure your space
- Step 2: Doors, Windows & Room Openings
- Step 3: Obstacles
- Step 4: Appliances
- Step 5: Ceiling Height
- Step 6: Photos and Submit

Note: Each small square is 3" x 3" and each large square is 12" x 12".

	1'	2'	3'	4'	5'	6'	7'	8'	9'	10'	11'	12'	13'	14'	15'
Start															
1'															
2'															
3'															
4'															
5'															
6'															
7'															
8'															
9'															
10'															
11'															
12'															
13'															
14'															
15'															

